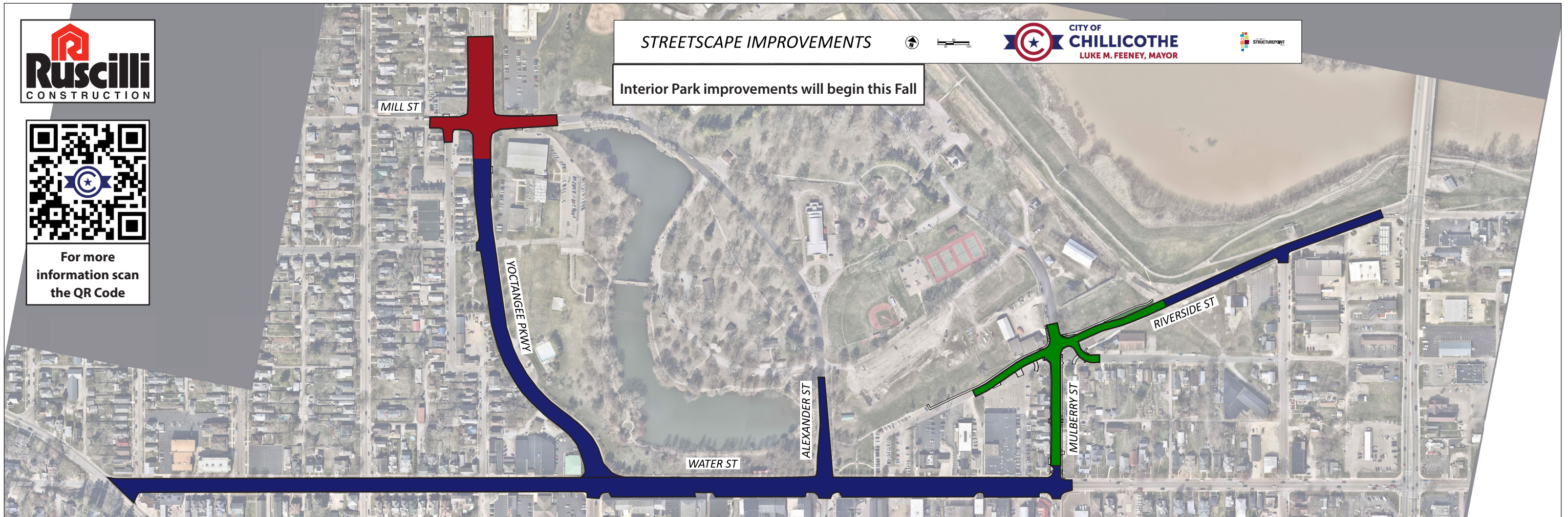


# CHILLICOTHE CITY STREETScape IMPROVEMENT PLAN



## PROJECT DESCRIPTION

The City of Chillicothe in conjunction with The Appalachian Community Grant Program and Ruscilli Construction, would like to introduce, as part of the Downtown Revitalization plan, road improvements to the city streets surrounding Yoctangee Park.

## TIMELINE

**Phase 1:** September 10<sup>th</sup> - October 3<sup>rd</sup>

**Phase 2:** October 1<sup>st</sup> - December 12<sup>th</sup>

**Phase 3:** March 2026 – July 2026

Interior Park improvements will begin this Fall

## GENERAL NOTES

- Construction hours will be between 7AM-5PM
- One lane of traffic in each direction will be maintained during construction
- Local access only on Mulberry Street from October 1<sup>st</sup> - December 12<sup>th</sup>
- New road signs and street striping & marking
- New head-in parking lanes on Water Street
- New street lights, crosswalks, and sidewalks at Riverside/Mulberry intersection
- New street lights and crosswalks at the Yoctangee Parkway roundabout
- Motorists will be able to access businesses and residences, though brief delays may occur

## PHASE 1

Water St. will undergo pavement resurfacing and striping from Western Ave. to Mulberry St. Lanes between Walnut St. and Mulberry St. will be reconfigured to one lane traffic in both directions with a dedicated center turn lane. Parking along the north side of Water St. will mirror the existing parking on the south side and become angled parking which will allow for additional parking spaces. Yoctangee Pkwy. will receive pavement resurfacing from Water St. to Mill St. Lanes will be reconfigured to one lane in both directions with a dedicated center turn lane as well as a bike lane on the east side. Additionally, a portion of Riverside St. will undergo pavement resurfacing and striping.

## PHASE 2

Mulberry St. will undergo full depth pavement replacement. Intersection improvements will occur at the Mulberry and Riverside St. intersection to realign the Race St. entrance for better traffic control and pedestrian safety.

## PHASE 3

Intersection improvements at Yoctangee Pkwy and Mill St. will include converting the existing traffic light to a single lane roundabout with new lighting and pedestrian safety improvements. Traffic flow will be eased by four splitter islands and crosswalks will be installed at each road crossing.